

**Cultivation of Palmarosa
(*Cymbopogon martini* var. CIM-
Harsh)**

At

**Amarpur Dhingoo Forest Plantation Site,
Ghumarwin**

Area for cultivation



Agreement of CIG with the Forest Department

- MOU of JICA Project was signed between GoHP and Japanese authorities in early 2018.
- Accordingly, the project envisages creation of CIG and their IGA on Govt. Forest land in respect of M&AP species.
- The activity can be carried during the project duration or as long as necessitated.
- Therefore, an initial period of 5 yrs. Agreement deed for allowing intercropping of med plants be allowed in the plantation area of the Forest Dept. Between Forest Authorities & the CIG Office bearers. This may be extended by another 3 years if after assessing by the HPFD, it is felt that the same is warranted by the ground reality.

Cymbopogon martini (Palmarosa)

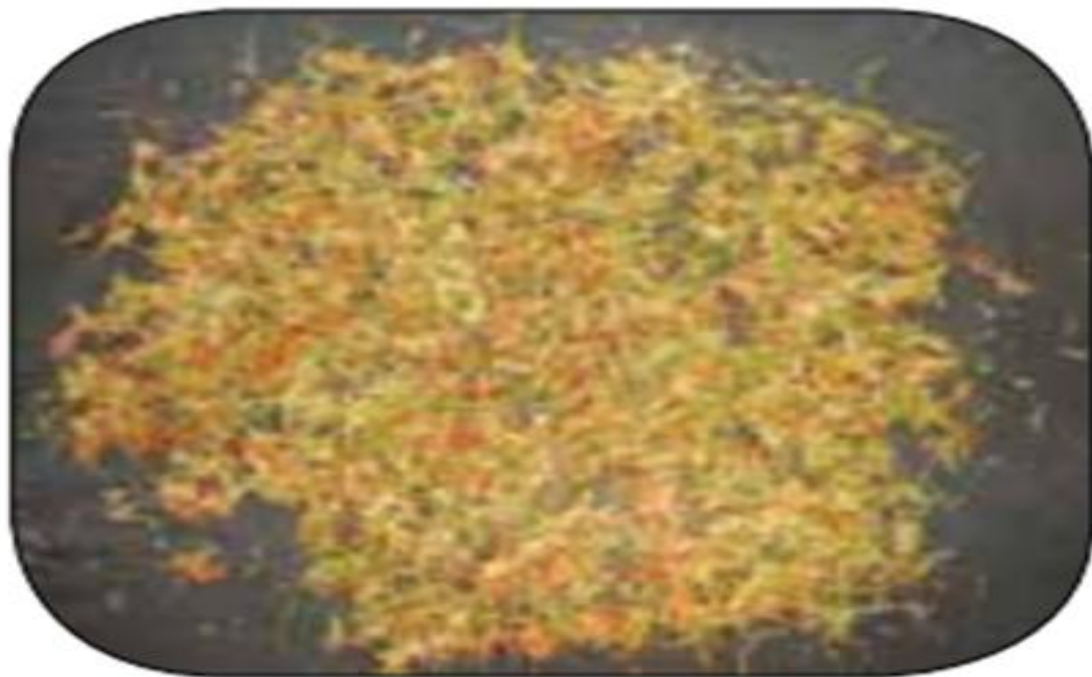


Palmarosa in cultivation



Raising of nursery beds

- Nursery will be raised in the plantation area only.
- In mid-May to June, raise 50 cm high 5m x 1m n/beds, fertilizer fym be added 2 baskets, 100g Calcium ammonium nitrate, 150g Super Phosphate & 50g Muriate of Potash
- 3cm deep lines be made 10 cm apart and seed mixed with sand in 1:10 ratio be sown, earth levelled.
- Watered with Rose can on alternate day, seeds will germinate in 4-6 days.
- After 4-6 weeks these be transplanted in the prepared beds in the field



Seeds of
Palmarosa
(CIM-Harsh)

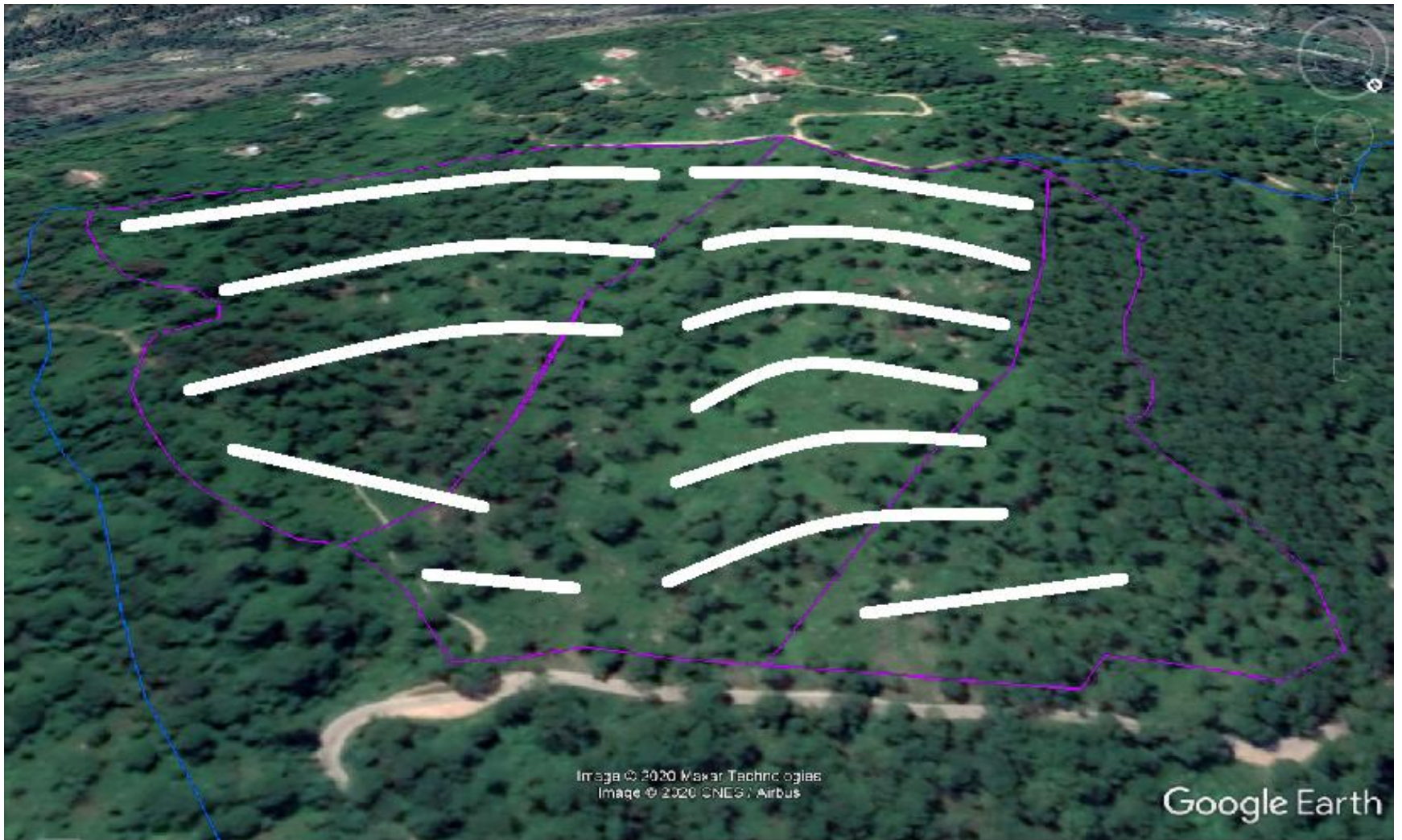


**PLANTS READY FOR
TRANSPLANTATION
AFTER 4-6 WEEKS**

Irrigation of crop

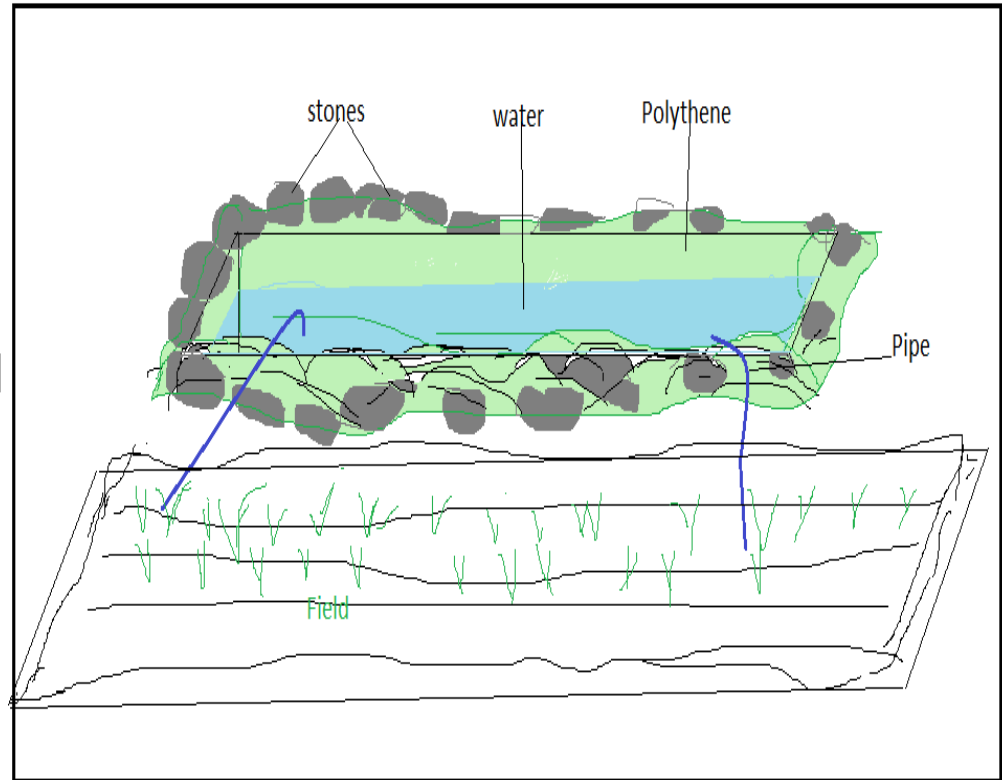
- Watering weather dependent
- In summer once watered in 10-14 days
- Not to be excess watered as plants get waterlogged, drainage to be formed
- Less watering results in wilting and reduction in oil contents
- Apply mulches to conserve moisture
- Stop watering 7-10 days before harvest

Trenching for Irrigation



Irrigation from Trenches

- Uphill trenches to be of a length as much reqd at a place (total ~ 1300 m) but have to be 1.5m deep and 0.5m wide
- Wherever moisture to be retained for longer period, a polythene lining is required in the trench and its edges stowed under the heavy stones covered with mud outside the margins.
- Thin flexible PVC pipes can be used for siphoning out water from the trench to the plantation site down-hill.



Irrigation



Harvesting



Chaff-Cutters

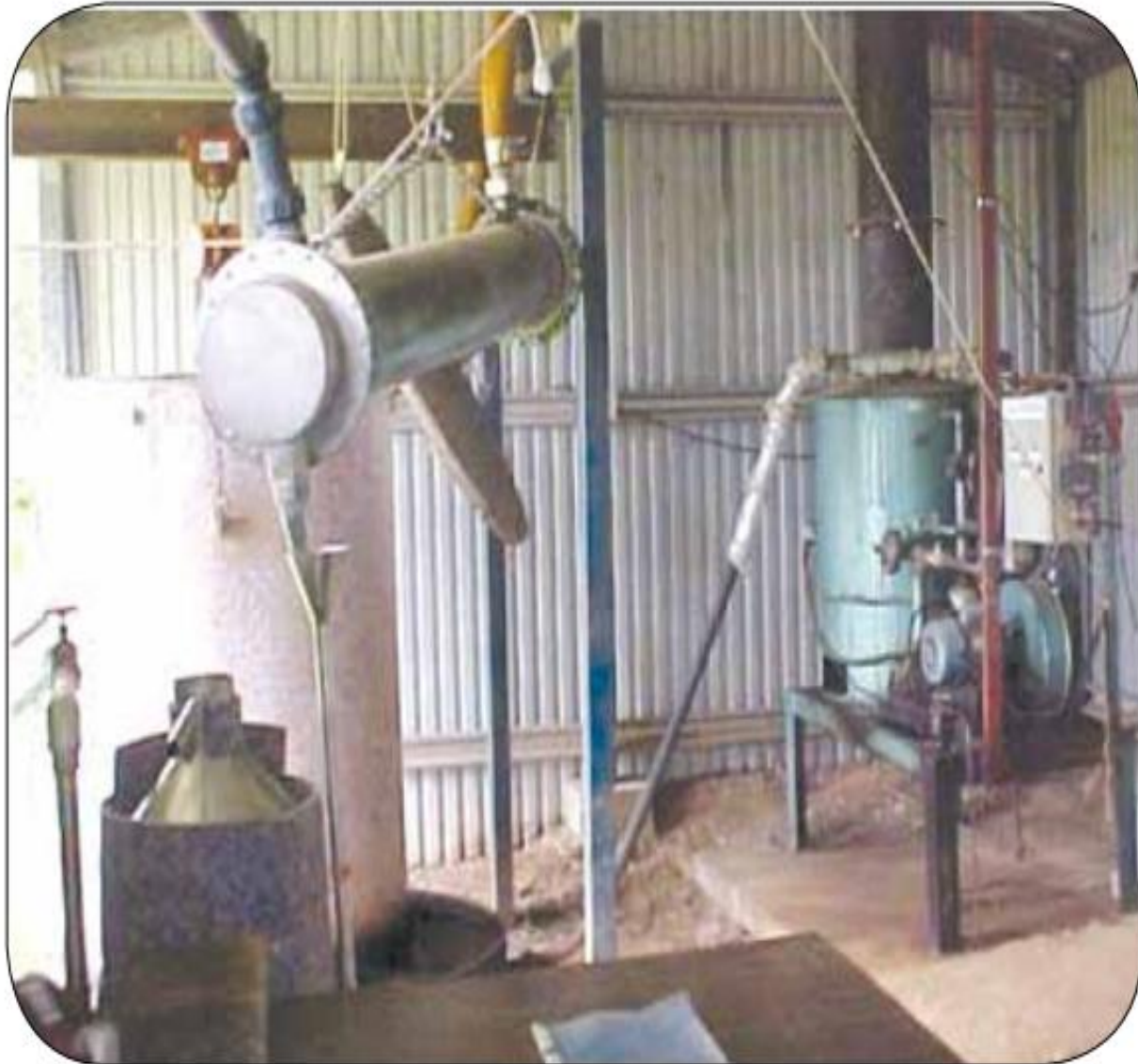


Processing

- Processing is most important
- After harvest, immediately transfer hay for processing
- Cut into 5 to 10 cm pieces by chaff-cutter
- Feed in separator which will be properly stacked when cut
- Fresh hay gives better quality oil but economical return is obtained from wilted grass after 12 hrs or so.
- Oil obtained from dried grass is of inferior quality



DISTILLATION UNIT



DISTILATION UNIT



Bottling

- To be bottled in amber coloured PET or HDPE bottles or Amber glass or Aluminium or Stainless Steel bottles.
- Capping unit to be provided

Protection

- Whole ward will be involved in protection of the assets created under the project. This will include :
 - Cultivation area
 - Distillation unit
 - C I G team will be responsible for involving other members of the ward

THANK YOU